

**CIVIC ENGAGEMENT
AND GOVERNMENT
UNITED STATES
STRATEGY**

CIVIC ENGAGEMENT AND GOVERNMENT - US STRATEGY

A powerful pro-democracy movement fueled by a “bigger we” towards a new vision of democracy and governance by and for the many, not the few

A BIGGER WE

Build a strong, resilient pro-democracy constituency that bridges traditional divides (urban/rural, race, gender, etc.) anchored in people’s institutions that channel democratic participation.

A BIGGER WE

REFLECTIVE GOVERNANCE

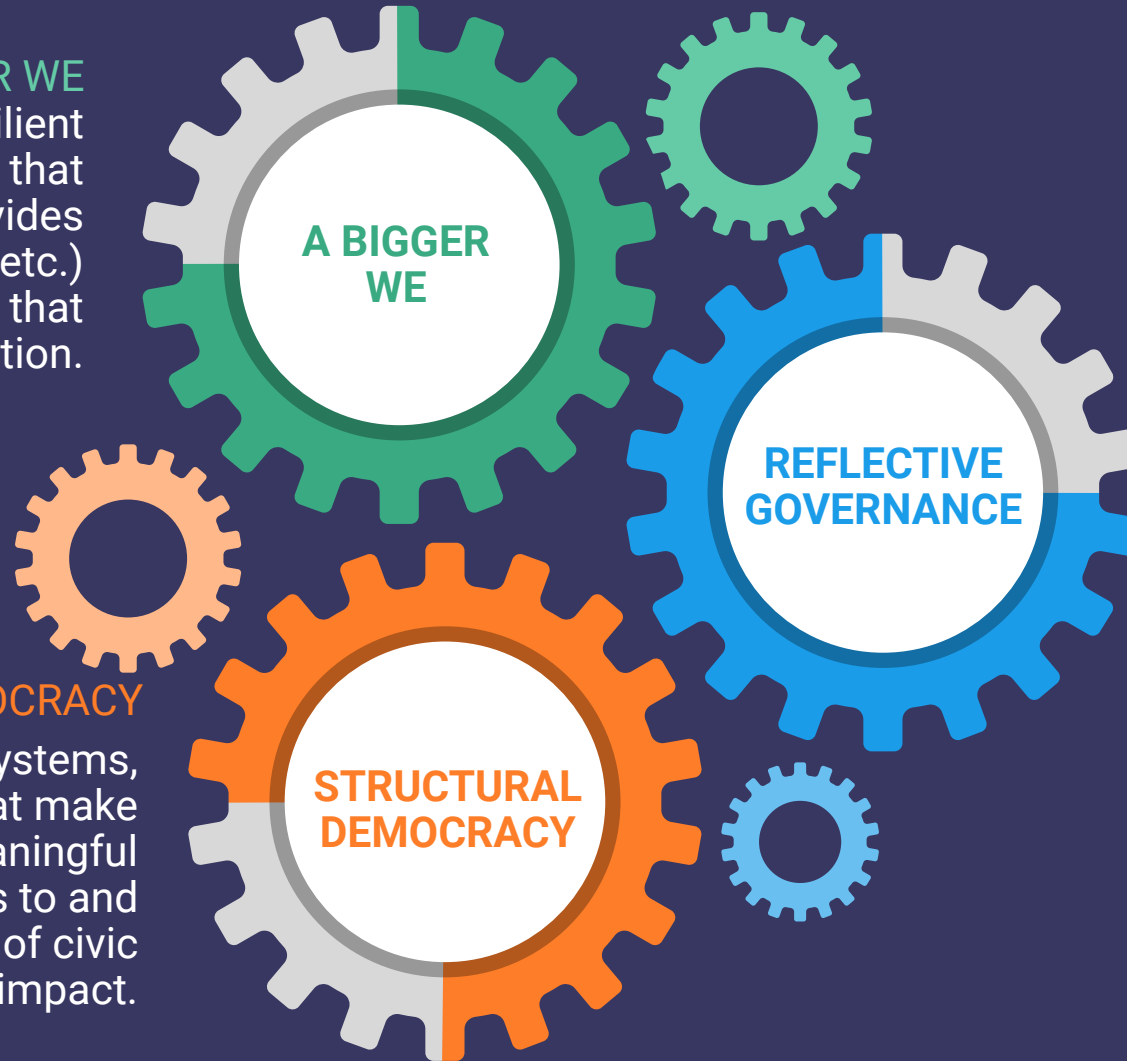
REFLECTIVE GOVERNANCE

Reshape government to reflect not only the demographics of its constituencies, but their vision, values, and priorities.

STRUCTURAL DEMOCRACY

Strengthen and protect the systems, processes, and institutions that make democratic participation meaningful by removing obstacles to and expanding pathways of civic engagement and democratic impact.

STRUCTURAL DEMOCRACY



CIVIC ENGAGEMENT AND GOVERNMENT - US STRATEGY

A powerful pro-democracy movement fueled by a “bigger we” towards a new vision of democracy and governance by and for the many, not the few



Who: Communities that are most excluded and facing the sharpest edge of inequality.

Where: Building strength at the state level that connects to communities as well as national level momentum. Supporting allied organizations at the national level to provide capacity and expertise.

Why: A generational crisis of U.S. democracy, in a moment of opportunity to deploy historic federal resources to fuel our priorities for a just, equitable future.

CIVIC ENGAGEMENT AND GOVERNMENT - US PATHWAY

We recognize that meeting this moment requires rebuilding each anchor of a resilient democracy through work that links across what otherwise is often siloed and splintered

A BIGGER WE

If we...

Support organizations and next generation leaders with deep roots in the communities on the sharpest edge of inequality to anchor a pro-democracy movement and reshape governance from the bottom up

Then...

Black, brown, immigrant, LGBTQ, women, disabled, working class, and other historically excluded communities will increasingly shape the vision and policies within their cities, states, and regions consistent with social justice.

REFLECTIVE GOVERNANCE

If we...

Support deep engagement by historically excluded communities and public leaders at the state and local level to reflect community priorities;

Develop innovative models of government process, state capacity, and pro-democracy structural reforms in close partnership with communities

Then...

Stronger and more networked institutions, tables, and coalitions of communities across traditional divides will advance social justice principles and policies in ways visible and tangible to communities, thereby rebuilding trust in democratic governance.

STRUCTURAL DEMOCRACY

If we...

Support broad, diverse alliances anchored within communities to defend and strengthen democratic systems and institutions

Then...

Communities will ensure elections remain free and fair, protect and expand voting rights and civic participation in priority geographies, and ensure an equitable, effective implementation of the 2030 Census.